



 **GOŠA**
MONTAŽA | PART OF **DSD**

Belgrade, Serbia

OUR NEXT 100 YEARS

In the year 2023 when we celebrate 100th anniversary since the founding of the company Goša, **Goša Montaža** enters the strategic partnership with **DSD Group** setting the course for the second century with the new ownership structure.

Staying true to vision and values of **Goša Montaža**, the partnership with the DSD Group further strengthens the position of Goša Montaža as a leader in the industry paving the way to the greater efficiencies and significant increase of the presence in the markets in Serbia and EU for both Goša Montaža and DSD Group for the years to come.

The strategic partnership with **Goša Montaža** and **DSD Group**, presented with the new visual identity, reflect the image of who we are as a company, its history and the direction we are headed in.

TABLE OF CONTENTS

01

HISTORY

We are the company with a rich history and with 100 years of experience

02

ACTIVITIES

Production and erection of all types of steel structure, pipelines and equipment

03

STAFF

Our strength is our people, trained and professional staff providing high quality products and services

04

TECHNICAL CAPABILITIES

We are equipped to tackle most challenging tasks offering complete range of services

05

REFERENCES

We are capable to perform most demanding projects resulting in long term partnerships and satisfied clients

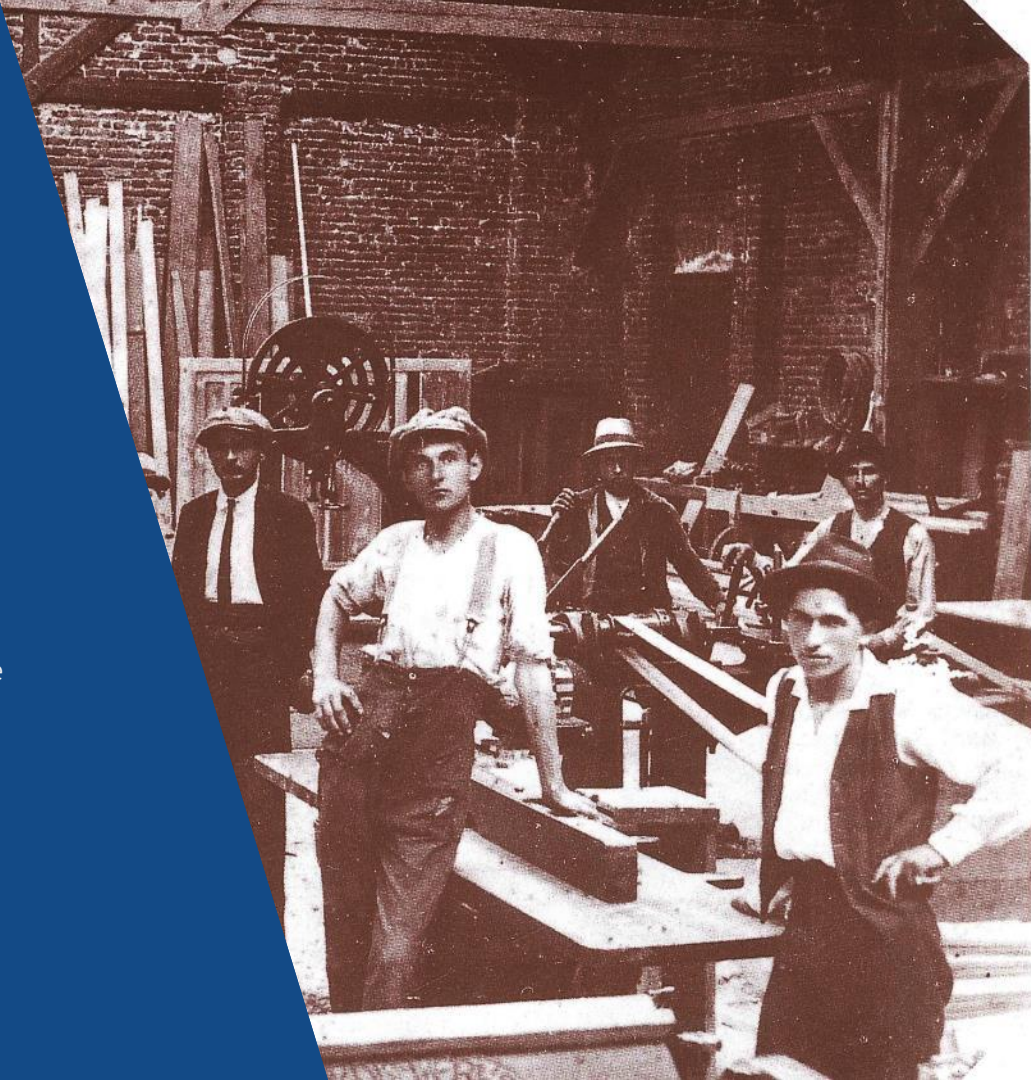
01

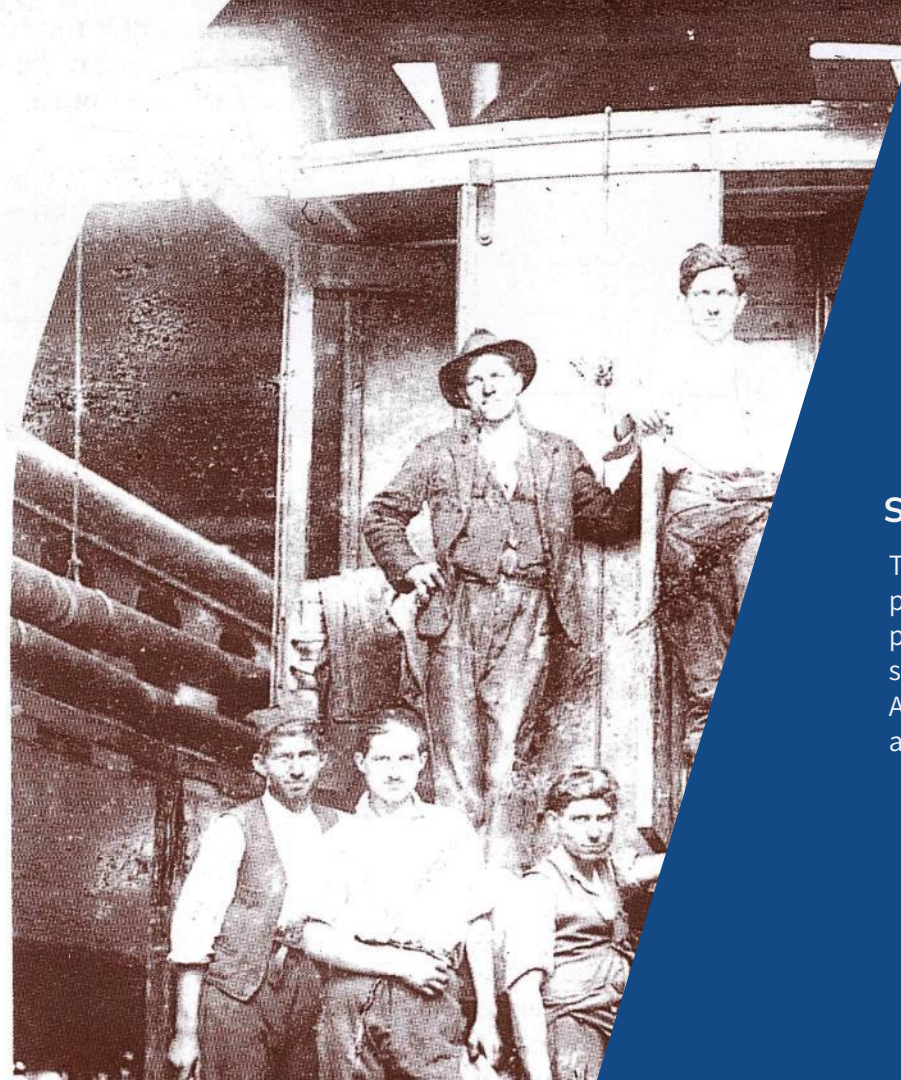
HISTORY



JASENICA > GOŠA

Goša Montaža dates back to 1923. It has started as Serbian-French joint-stock company **Jasenica**. The company operated under this name until 1949. As it progressed and developed, Jasenica became a large business system. Since 1950 it has been operating under the name GOŠA.





STEEL CONSTRUCTION

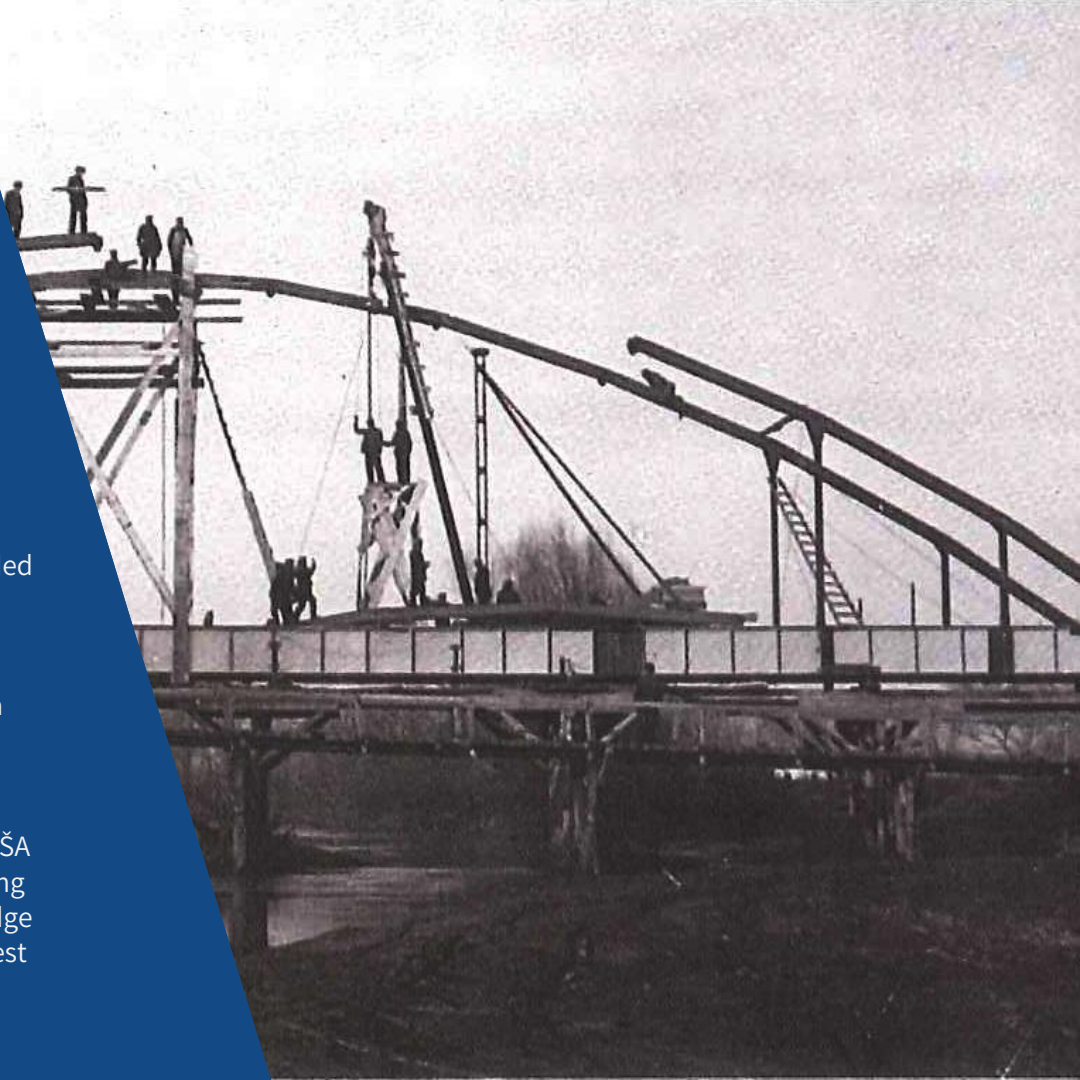
The period from 1931 to 1941 can be considered as the period of mastering the production of steel structures and partially the equipment. The workers were provided with specially designed training.

A special workshop for the production of steel construction - a bridge workshop was built during 1930 and 1931.

BRIDGE CONSTRUCTION

In 1937, the Mostogradnja Jasenice AD built the first welded bridge on the Timok River near Zaječar. A manual arc welding technique was used. To build the bridge by welding, the factory had to obtain a certificate from accredited institutions of Yugoslavia and Europe. It was a great feat at the European level.

After the end of WWII, in 1945, over 2,000 tons of steel construction were retrieved from the river Sava, and the venture itself is considered to be the beginning of the GOŠA MONTAŽA era. Most of the bridges were demolished during the war, and reconstruction was crucial. Twenty-one bridge was rebuilt, and several new bridges were built. The largest one was Bogojevo bridge on the river Danube.



1923 – 2023

100 Years of Experience

Power Plants

Metallurgical Industry

Regulation Works

Food Industry

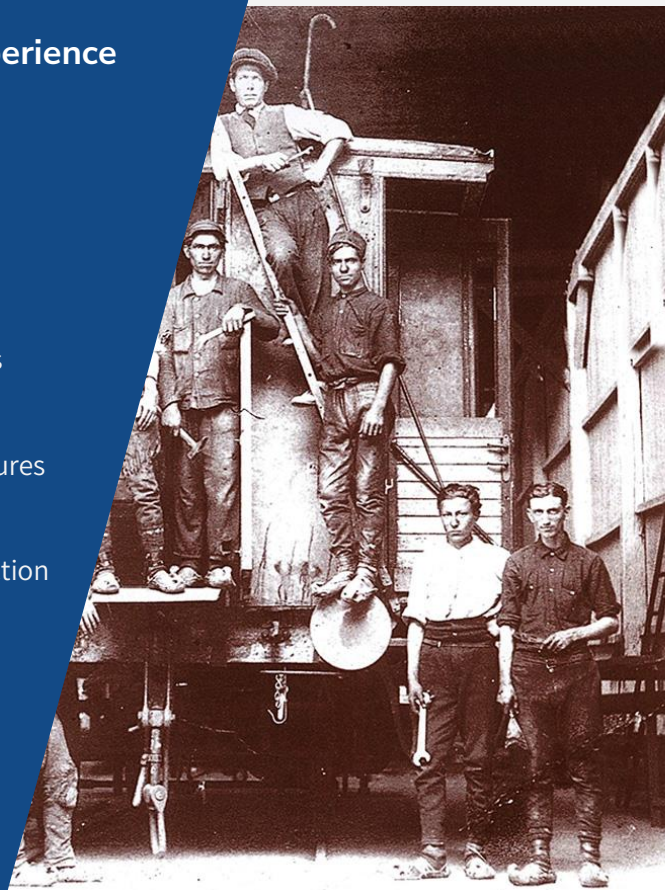
Water supply Facilities

Process Industry

Bridges & Steel Structures

Cement Plants

Railway steel construction





02

ACTIVITIES

ACTIVITIES



**Design &
Workshop
Drawing
Elaboration**



**Production
of Equipment
& All Types
of Steel
Structures**



Maintenance



Erection



**Rental of
Transport &
Machinery
Equipment**

PRODUCTION



Mining Machine Equipment

Flotation/separation facilities,
complete excavator – belt stacker
system, excavator-conveyor-spreader,
bunkers



Hydromechanical Equipment

Turbines, Shutters and ship locks,
Turbines regulatory system, intake
gates, gratings, linings in tunnels,
reversible pipelines in tunnel and out
of tunnel, compensators, forks,
transition pieces



Thermal Power Plant Equipment

Boiler equipment, bunkers,
electrostatic precipitators, ash slurry
systems, boilers piping system, ducts
and burners

PRODUCTION



Steel Structure

Pipe racks, Platforms, Cranes, Pillars & Portals, Flare Stack, Pipeline supports



Mechanical Treatment

Gearbox and motor stands, Special flanges, Shafts, wheels



Pressure Vessels (PE Directive)

Municipal gas pipelines, industrial, water and process pipelines. Gas stations, drainage stations, storage tanks

ERECTION

Hydro Power
Plant
Equipment

Mining
Equipment

Thermal
Power
Plant
Equipment

Rotation
Equipment

ERECTION

Metallurgical
Equipment

Processing
Equipment

Oil Industry

Other Steel
Structure
& Equipment

03

STAFF



**Senior
designers**

Responsible Contractor

**Licensed IWE/EWE
engineers**



OUR STAFF

**Qualified workers
(fitters & welders)**

**Certified
controllers**

**Certified
welders**

111 (SMAW); 121 (SAW)
131,135; (GMAW) 136; (FCAW)
141 (GTAW); 311 (OWF)

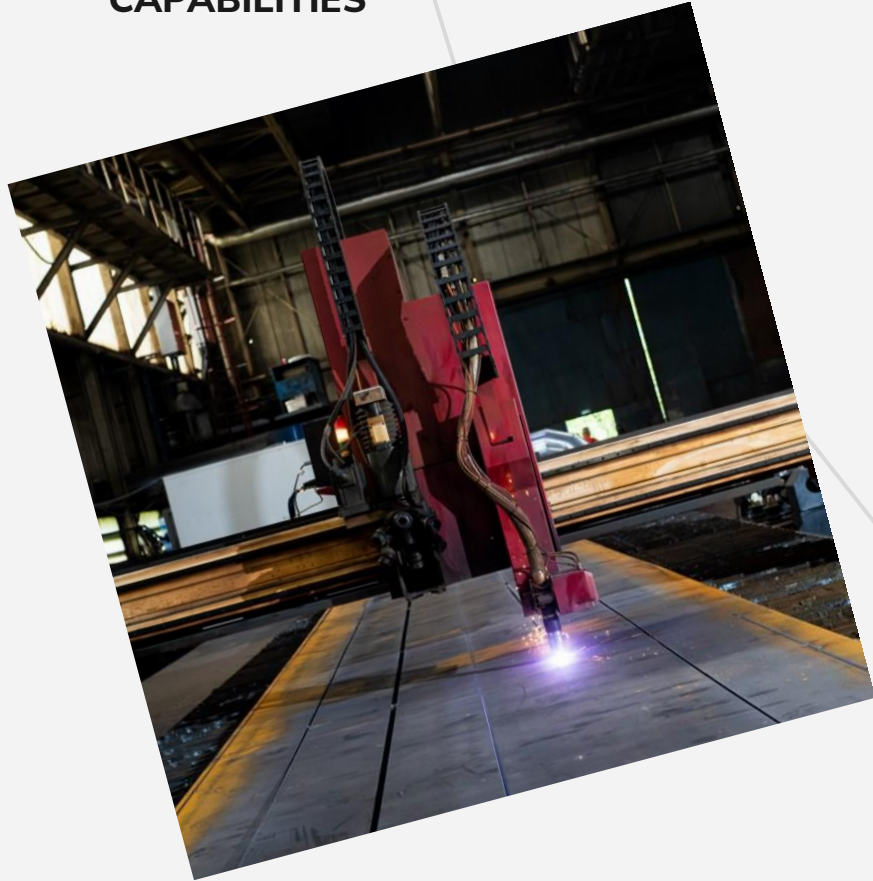
**Administrative
staff for all
activities**



04

TECHNICAL CAPABILITIES

TECHNICAL CAPABILITIES



CNC machines for cutting and drilling (gas, plasma & saw)
Metal treating machines by scraping
Material shaping machines without scraping
Shot blasting and anticorrosive systems
Control and measuring tools
Goods transport equipment and worker transportation (lowbed trailer of 50t , barges, trucks, buses, passenger & cargo vehicles)
Autocranes (from 20 t to 300 t capacity - total 14 cranes)
Forklift trucks
Rotational telehandlers
Diesel generator sets for power production
Mobile platforms and baskets
Scaffolds
All other necessary tools and accessories

CIRCLED PROCESS OF CONTRACTS REALIZATION



NEW FACILITIES



THE LATEST INVESTMENTS

Palfinger :: 10 t carrying capacity, 15 t / 8 m box

Rotating tele-handler MANITOU :: 4 t / 16 m with compl. Accessories

Shot blasting & painting workshop :: 2 chambers, each 20 x 7 x 5 m

Crane LIEBHERR :: 60 t, 90 t, 250 t

Forklift :: 12 t



05

REFERENCES

PROJECT DIVERSITY
Production and
Installation

... the last few years ...



THERMAL POWER PLANT

TENT B

Project Flue Gas Desulphurization

Production and Erection Work:

Pipe and Cable Racks – 600 t, length 1 km

Support Steel Structure – 1.100 t

Flue Gas Ducts- 1.800 t

(10.1x10.1m, erection at elevation from +18m and +30m

Erection Work:

Ball Mills for Limestone Milling Building

(3 Ball Mills, 85 t)



REFERENCES

THERMAL POWER PLANT

TENT A Project Flue Gas Desulphurization

Erection works
Ducts A3 and A4
Absorber C1



THERMAL POWER PLANT

TENT B **Revitalization of Unit B1**

Installation of a new RA steam pipelines
Superheater P4
Separators
Combustion grate
Flue gas duct expansion joints



REFERENCES

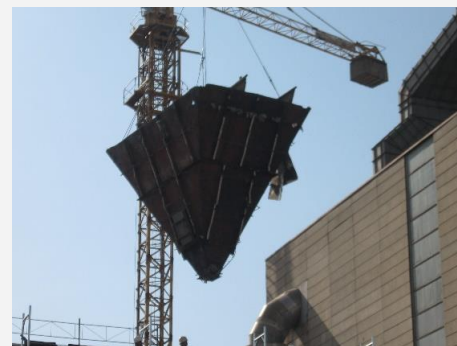
THERMAL POWER PLANT

TPP Morava Reconstruction ESP

Dismantling 449 t

Production 433 t

Erection 636 t



THERMAL POWER PLANT

TEKO Kostolac B3

Manufacturing and erection of
the settling oil storage tank

Heavy Oil Tank R3000



REFERENCES

THERMAL POWER PLANT

TEKO A Kostolac **Ash handling system**

Steel structure production 457 t
Pipe coils manufacture 273 t
Erection works scope 1.025 t



REFERENCES

THERMAL POWER PLANT

TEKO B1 Kostolac

Manufacturing and erection of
the new NOx reduction system



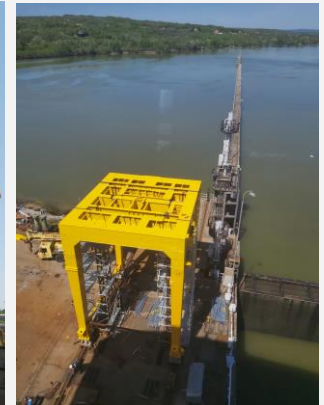
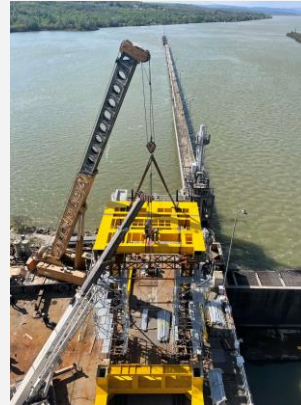
REFERENCES

HYDROPOWER PLANT

Đerdap 2

Upgrade of Iron Gate 2 Navigation Lock - ongoing

- 3 new cranes capacity of 40 t
- Operational two wing doors downstream (lower) head
- Safety net and trash racks
- Discharge and drainage system
- Disassembly of old and installation of a new upper head service gate



REFERENCES

MINI HYDROPOWER PLANT

Žuta stena

Design, manufacturing and erection
of hydromechanical equipment

Radial gates – 2 x 10 t

Maintenance and intervention slide gates

Installation of the radial gate
automized control system



REFERENCES

HYDROPOWER PLANTS

Đerdap 1

Manufacture & Installation of Pipeline for
Generator Turbine Regulation System
Manufacture & Delivery of Pipeline for
Cooling System Upgrade of Cleaning
Equipment Kosovica pump station
reconstruction

Đerdap 2

Capital Overhaul BPZ A8 I Hydro-mechanical
equipment for overflow dam Radial gate
overhaul



REFERENCES

HYDROPOWER PLANT

Zvornik HPP

Drainage System Replacement
Reconstruction of Turbine
Turbine Regulation System
Cooling & Compressed Air System
Revitalization of Hydromechanical
Equipment
Repair of Pre-Turbine Gate
Repair of Trashrack on Pre-Turbine Supply
Draft Gate Repair
Sector Regulation Gate Repair



REFERENCES

MINING EQUIPMENT

Open-Pit Mine Drmno – Crushing Plant TE-KO Kostolac B3

Erection - Bucket Wheel Stacker / Reclaimer
STR 2400/ 1900.35 SWVK



REFERENCES

MINING EQUIPMENT

Open-Pit Mine Drmno – Crushing Plant TE-KO Kostolac B3

Erection of steel structure and equipment:
Tripper Car for Ash, Slag,
and Gypsum Transport System



REFERENCES

MINING EQUIPMENT

**Open-Pit Mine Drmno
TE-KO Kostolac**

Erection - Excavator SchRs 1400
Thyssen KRUPP 3.118 t



ThyssenKrupp



REFERENCES

MINING EQUIPMENT

RB Kolubara

Erection - Spreader 12000
FLSmidth 1.947 t



REFERENCES

MINING EQUIPMENT

**Open-Pit Mine Drmno
TE-KO Kostolac**

Machine Treatment on Site
Running Wheel Drive Replacement
Excavator SRs 2000 TAKRAF



REFERENCES

PANČEVO OIL REFINERY MHC/DHT

Steel Structure ISBL/OSBL

Workshop Drawing Elaboration

Steel Structure Manufacturing

Steel Structure Erection

Erection of Piping OSBL

Workshop Drawing Elaboration

Piping Erection

Hydro-Testing (PED certificate)

Manufacturing and Erection of Piping Supports

Heating

Flare

Steel Structure

Service Piping

Demi Water

Manufacturing and Erection of 4 Tanks

Piping & Equipment, I/E



REFERENCES

PANČEVO OIL REFINERY MHC/DHT

Steel Structure

Workshop Drawing Elaboration 4.400 t

Manufacturing 4.800 t

Erection 6.000 t

Completion time 10 months



REFERENCES

PANČEVO OIL REFINERY MHC/DHT

Erection of Piping

Erection of Piping 1.750 t

Welding 40.000 WDI (TIG)

Pipe Supports (Production & Erection) 55 t

Heating 27.320 m

Executed Hydro-Tests 255

Connection Points 219

Test of Package 474

NDT (non-destructive test) 7.108

WDI 1.192 connections

Completion time 6 months



REFERENCES

PANČEVO OIL REFINERY MHC/DHT

Flare

Steel Structure 228 t

Service Piping 45 t

Height 141 m

Completion Time 51 day



REFERENCES

GAS REFINERY ELEMIR

Plant for Separation of CO₂ from Natural Gas

Steel Structure Manufacturing & Erection 269 t

Manufacturing & Erection of Pipe Spools 69 t

Erection of Other Equipment 176 t



REFERENCES

NOVI SAD OIL REFINERY

Reconstruction of 7 Tanks

Equipment manufacture Σ 780 t

Production of Floor Shell & Tank Roof

Manufacture of Heat Exchangers

FF System Installation

Production of Connection Elements

Erection Σ 910 t

Erection of Reconstructed Assemblies &

Equipment Belonging to any tank incl. Erection of

Aluminium Membranes &

Aluminium Roof with

Accessories



REFERENCES

PANČEVO OIL REFINERY

Reconstruction of Charge Heating System on S-300 Plant Catalytic Reforming PACKINOX

Manufacture & Erection of New Steel Structure,
30 t Weight

Erection of New Heat Exchanger - PACKINOX,
105 t Weight

Erection of Complete New Pipeline
Connecting with the Existing Plant System



REFERENCES

PANČEVO OIL REFINERY

Replaced Separator,
Internal Equipment & Reactor Cap,
54 t weight,
with Associated Pipelines, Lining & Equipment



REFERENCES

HIP NITROGEN PLANT PANČEVO

Design of Dismounting and
Erection of Granule Tower Structure and
Wet Treatment Hall in KAN Plant

Dismantling & Erection
Steel Structure 700 t
Pipeline 100 t
Equipment 250 t



REFERENCES

PETROCHEMICAL INDUSTRY PEVG FACTORY

Reconstruction of PF Section

Dismantling of Equipment 115 t

Erection of Equipment 140 t

Erection of Piping 70 t

Dismantling/Production, Erection of Steel Structure 25 t

Completion Time 75 days



PETROHEMIJA



REFERENCES

CEMENT PLANT MORAVACEM Popovac

Dismantling of satellite coolers, tunnels, load-bearing stations and part of the kiln shell

Erection works on dedusting system for clinker coolers

Mechanical assembly of clinker coolers and steel construction of the firebox building



REFERENCES

RAILWAY INFRASTRUCTURE steel structure

Newly-Built 200 km/h

Project of Modernization and
Reconstruction of
Hungarian–Serbian railway in
territory of the Republic of Serbia



中国铁建



中铁国际集团有限公司
CHINA RAILWAY INTERNATIONAL GROUP

REFERENCES

NIS
Gas Stations
Ruma 1
Subotica
Zrenjanin



SRPS ISO 9001

SRPS ISO 14001

SRPS ISO 45001

CERTIFICATION BODY
DOO PANCERT NOVI SAD
Dunavska 231, Novi Sad, Serbia



Certificate

Certificate Registration No. 01-012

By which the Certification body PANCERT NOVI SAD
certifies that

GOŠA MONTAŽA AD

Beograd, Srbija

Knićaninova 3

Velika Plana, 28. oktobra 65

Smederevska Palanka, Industrijska 70, Rudine bb

Has established and applies Quality Management System in
compliance with the requirements of

SRPS ISO 9001:2015

for the following Scope of application:

Fabrication and Erection of Steel Structure
(halls, bridges, towers and others)

Fabrication and Erection of the Equipment for Hydro Power Pla
and Thermal Power Plants, Process Equipment for Industry and Pip
Planned and Ongoing Maintenance Services

Certificate issuing date: 2004-03-25
Recertification date and change: 2022-03-25
This certificate is valid until: 2025-03-24



Head Executive:
Donata Veg Jurisovski

The Certificate is valid only with regular Annual Surveillance Audits

CERTIFICATION BODY
DOO PANCERT NOVI SAD
Dunavska 231, Novi Sad, Serbia



Certificate

Certificate Registration No. 188-12

By which the Certification body PANCERT NOVI SAD
certifies that

GOŠA MONTAŽA AD

Beograd, Srbija

Knićaninova 3

Velika Plana, 28. oktobra 65

Smederevska Palanka, Industrijska 70, Rudine bb

Has established and applies Environmental Management System in
compliance with the requirements of

SRPS ISO 14001:2015

for the following Scope of application:

Fabrication and Erection of Steel Structure
(halls, bridges, towers and others)

Fabrication and Erection of the Equipment for Hydro Power Plants
and Thermal Power Plants, Process Equipment for Industry and Pipeli
Planned and Ongoing Maintenance Services

Certificate first issuing date: 2012-03-27
Valid from: 2021-03-27
This Certificate is valid until: 2024-03-26



Head Executive:
Donata Veg Jurisovski, B.Sc.

The certificate is valid only with the regularly annual surveillance audit

Rev. 2.6

INTEGRATED MANAGEMENT SYSTEM

CERTIFICATION BODY
DOO PANCERT NOVI SAD
Dunavska 231, Novi Sad, Serbia



Certificate

Certificate Registration No. 200-12

By which the Certification body PANCERT NOVI SAD
certifies that

GOŠA MONTAŽA AD

Beograd, Srbija

Knićaninova 3

Velika Plana, 28. oktobra 65

Smederevska Palanka, Rudine bb

Has established and applies Occupational Health and
Safety Management Systems in compliance with the requirements of

SRPS ISO 45001:2018

for the following Scope of application:

Fabrication and Erection of Steel Structure
(halls, bridges, towers and others)

Fabrication and Erection of the Equipment for Hydro Power Plants
and Thermal Power Plants, Process Equipment for Industry and Pipelines
Planned and Ongoing Maintenance Services

Certificate first issuing date: 2012-11-27
Valid from: 2021-11-27
This Certificate is valid until: 2024-11-26



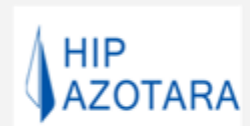
Head Executive:
Donata Veg Jurisovski, B.Sc.

The certificate is valid only with the regularly annual surveillance audit

Rev. 4.6.1

1017-CPR-07.936.545 rev.1 of 10.07.2017.

LONG TERM PARTNERS / SATISFIED CUSTOMERS





THANKS

Questions and further information

montaza@gosamontaza.rs

+381 11 30.35.833

www.gosamontaza.rs





GOŠA
MONTAŽA

PART OF

DSD